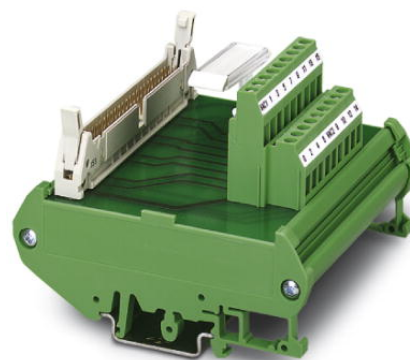


# FLKM 50/16/SLC500

Order No.: 2293488



<http://eshop.phoenixcontact.de/phoenix/treeViewClick.do?UID=2293488>

VARIOFACE termination board, to transmit max. 16 channels, only in connection with FLKM 50-PA-SLC 500 OUT/2 A



## Commercial data

EAN	4017918108885
Pack	1 Pcs.
Customs tariff	85369010
Weight/Piece	0.1723 KG
Catalog page information	Page 165 (IF-2007)

## Product notes

WEEE/RoHS-compliant since:  
07/12/2006



<http://www.download.phoenixcontact.com>  
Please note that the data given here has been taken from the online catalog. For comprehensive information and data, please refer to the user documentation. The General Terms and Conditions of Use apply to Internet downloads.

## Technical data

### General data

Nominal voltage $U_N$	120 V AC/DC
Max. current carrying capacity per branch	1 A
Max. total current of voltage supply	2 A (per channel)

Length	90 mm
Width	90 mm
Height	68 mm
Status display	No
Ambient temperature (operation)	-20 °C ... 50 °C
Ambient temperature (storage/transport)	-20 °C ... 70 °C
Test voltage	500 V (50 Hz, 1 min.)
Mounting position	Any
Standards/regulations	IEC 60664
	DIN EN 50178
	IEC 62103
Pollution degree	2
Surge voltage category	II

#### Connection data

Connection 1	Field level
Connection in acc. with standard	IEC / EN
Type of connection	Screw connection
Conductor cross section solid min.	0.2 mm <sup>2</sup>
Conductor cross section solid max.	4 mm <sup>2</sup>
Conductor cross section stranded min.	0.2 mm <sup>2</sup>
Conductor cross section stranded max.	2.5 mm <sup>2</sup>
Conductor cross section AWG/kcmil min.	24
Conductor cross section AWG/kcmil max	12
Stripping length	8 mm
Screw thread	M 3
Connection 2	Control system level
Number of connections	1
Type of connection	Flat-ribbon cable plug connector in acc. with IEC 60603-13
Number of positions	50

#### Certificates / Approvals

#### Approval logo



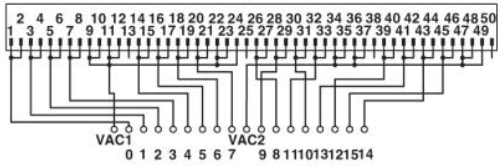
**requested approbations**

Certification	CUL, GOST, UL
---------------	---------------

**Drawings**

Circuit diagram

Connection scheme FLKM 50/16/SLC500



**Address**

PHOENIX CONTACT GmbH & Co. KG  
Flachsmarktstr. 8  
32825 Blomberg, Germany  
Phone +49 5235 3 00  
Fax +49 5235 3 41200  
<http://www.phoenixcontact.de>



© 2008 Phoenix Contact  
Technical modifications reserved;